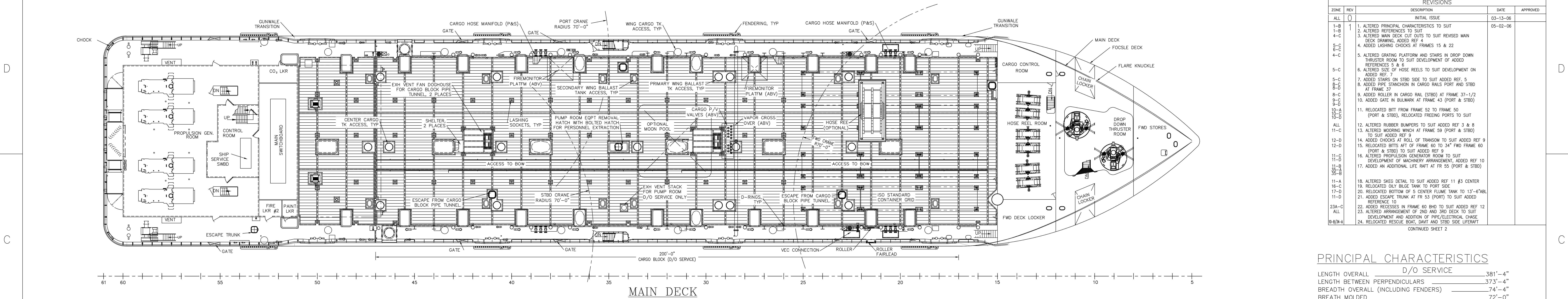


12 11 10 9 8 7 6 5 4 3

DWG NO 1.001 SH 1 1

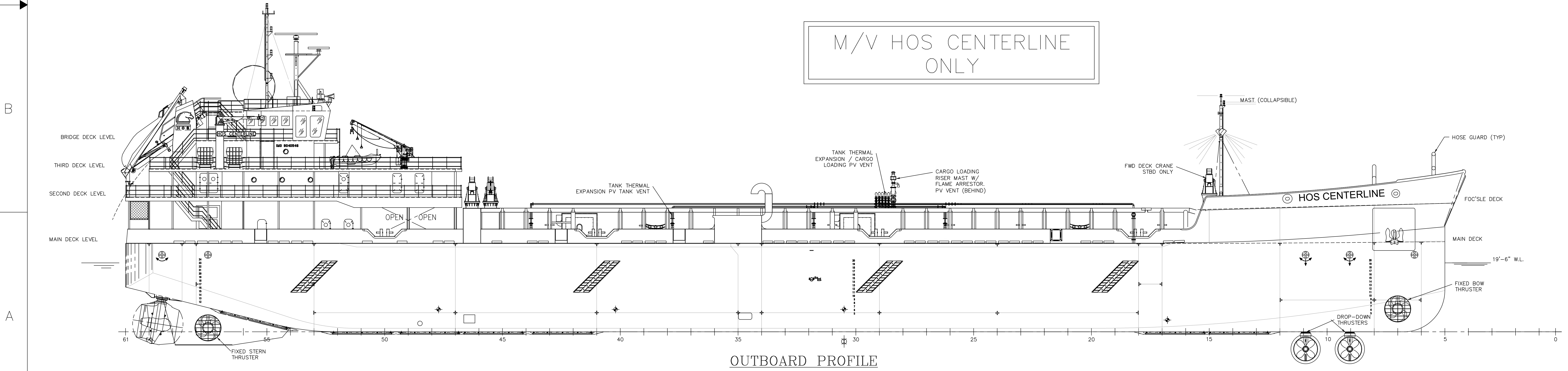


REVISIONS				
ZONE	REV	DESCRIPTION	DATE	APPROVED
ALL	0	INITIAL ISSUE	03-13-06	
1-B	1	1. ALTERED PRINCIPAL CHARACTERISTICS TO SUIT	05-02-06	
1-B		2. ALTERED REFERENCES TO SUIT		
4-C		3. ALTERED MAIN DECK CUT OUTS TO SUIT REVISED MAIN DECK DRAWING, ADDED REF 4		
5-C		4. ADDED LASHING CHOCKS AT FRAMES 15 & 22		
4-C		5. ALTERED GRATING PLATFORM AND STAIRS IN DROP DOWN THRUSTER ROOM TO SUIT DEVELOPMENT OF ADDED REFERENCES 5 & 6		
5-C		6. ALTERED SIZE OF HOSE REELS TO SUIT DEVELOPMENT ON ADDED REF. 7		
5-C		7. ADDED STAIRS ON STBD SIDE TO SUIT ADDED REF. 5		
8-C		8. ADDED PIPE STANCHION IN CARGO RAILS PORT AND STBD AT FRAME 37		
8-C		9. ADDED ROLLER IN CARGO RAIL (STBD) AT FRAME 37-1/2		
9-D		10. ADDED GATE IN BULWARK AT FRAME 43 (PORT & STBD)		
10-A		11. RELOCATED BITT FROM FRAME 52 TO FRAME 50 (PORT & STBD), RELOCATED FREING PORTS TO SUIT		
10-D		12. ALTERED RUBBER BUMPERS TO SUIT ADDED REF 3 & 8		
11-C		13. ALTERED MOORING WINCH AT FRAME 59 (PORT & STBD) TO SUIT ADDED REF 9		
12-D		14. ADDED CHOCKS AT ROLL OF TRANSOM TO SUIT ADDED REF 9		
12-D		15. RELOCATED BITTS AFT OF FRAME 60 TO 34" FWD FRAME 60 (PORT & STBD) TO SUIT ADDED REF 9		
11-C		16. ALTERED PROPULSION GENERATOR ROOM TO SUIT DEVELOPMENT OF MACHINERY ARRANGEMENT, ADDED REF 10		
11-D		17. ADDED AN ADDITIONAL LIFE RAFT AT FR 55 (PORT & STBD)		
11-B		18. ALTERED SKEG DETAIL TO SUIT ADDED REF 11 #3 CENTER		
11-B		19. RELOCATED ONLY BILGE TANK TO PORT SIDE		
11-A		20. RELOCATED BOTTOM OF 5 CENTER FLUME TANK TO 13'-6" ABL		
16-C		21. ADDED ESCAPE TRUNK AT FR 53 (PORT) TO SUIT ADDED REFERENCE 10		
17-D		22. ADDED RECESSES IN FRAME 60 BHD TO SUIT ADDED REF 12		
11-D		23. ALTERED ARRANGEMENT OF 2ND AND 3RD DECK TO SUIT DEVELOPMENT AND ADDITION OF PIPE/ELECTRICAL CHASE		
23A-C		24. RELOCATED RESCUE BOAT, DAVIT AND STBD SIDE LIFERAFT		
ALL		CONTINUED SHEET 2		

200'-0" CARGO BLOCK (D/O SERVICE)

MAIN DECK

M/V HOS CENTERLINE ONLY




OUTBOARD PROFILE

PRINCIPAL CHARACTERISTICS

D/O SERVICE	
LENGTH OVERALL	381'-4"
LENGTH BETWEEN PERPENDICULARS	373'-4"
BREADTH OVERALL (INCLUDING FENDERS)	74'-4"
BREATH MOLDED	72'-0"
DEPTH MOLDED AT SIDE	25'-0"
DEPTH MOLDED AT CENTERLINE	25'-6"
SCANTLING DRAFT	19'-6"
SUMMER LOAD LINE, MOLDED	14'-10"
DEADWEIGHT @ LOADLINE	4,899 LT
TONNAGE (ITC)	5960 GT
LIQUID HAZARDOUS CARGO	24,547 BBL
SHIP'S FUEL	488,516 USG
BALLAST WATER	1,352,836 USG (32,210 BBL)
FRESH WATER	64,979 USG
PERSONNEL ACCOMMODATIONS	47 PERSONS

11	WING TANK LIQUID MUD AGITATION SYSTEM ARR & DETS	8,410
10	STERN Z-DRIVE FOUNDATION DETAILS	5,340
9	SKEG DETAILS	2,501
8	MACHINERY ARRANGEMENT, ALL LEVELS	7,001
7	MOORING ARRANGEMENT	3,501
6	RUBBER BUMPER DETAILS	3,601
5	HOSE REEL FOUNDATION	3,852
4	GRATINGS, ALL LEVELS	4,710
3	SPECIFICATIONS FOR MULTI-PURPOSE SUPPLY VESSEL DATED 24 APRIL 2006 REV 2	
2	STAIRS, ALL LEVELS	4,101
1	MAIN DECK & TOP OF TANK STRUCTURE	2,201

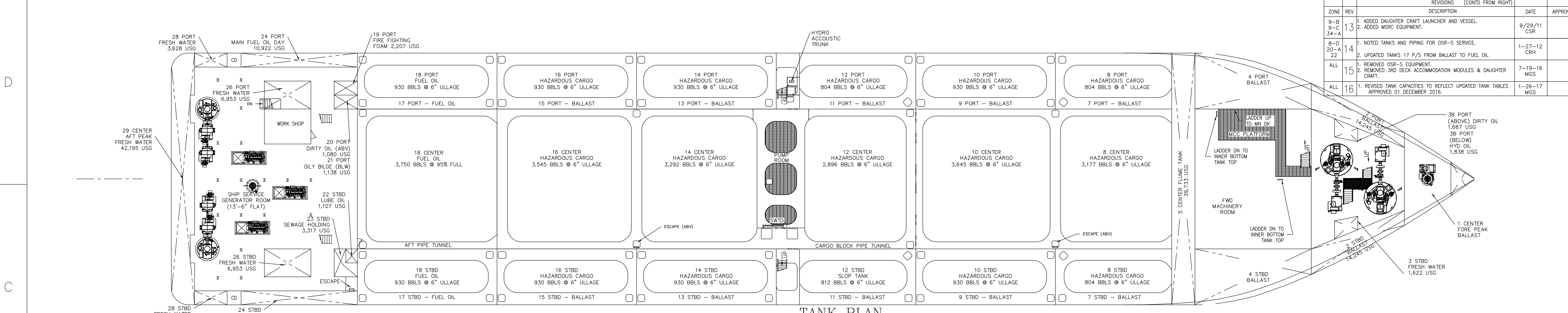
REF NO	DRAWING TITLE	DRAWING NO
	REFERENCES	


HORNBECK OFFSHORE SERVICES
THIS DRAWING, DESIGN CONCEPT AND SPECIFICATIONS ARE THE PROPERTY OF HORNBECK OFFSHORE SERVICES AND ARE FURNISHED ON A CONFIDENTIAL BASIS WITH AN EXPRESSED UNDERSTANDING THAT THEY WILL NOT BE COPIED IN ANY MANNER USED FOR MANUFACTURE, SOLD, TRANSFERRED, NOR USED TO THE DETRIMENT OF SAID FIRM WITHOUT WRITTEN PERMISSION.

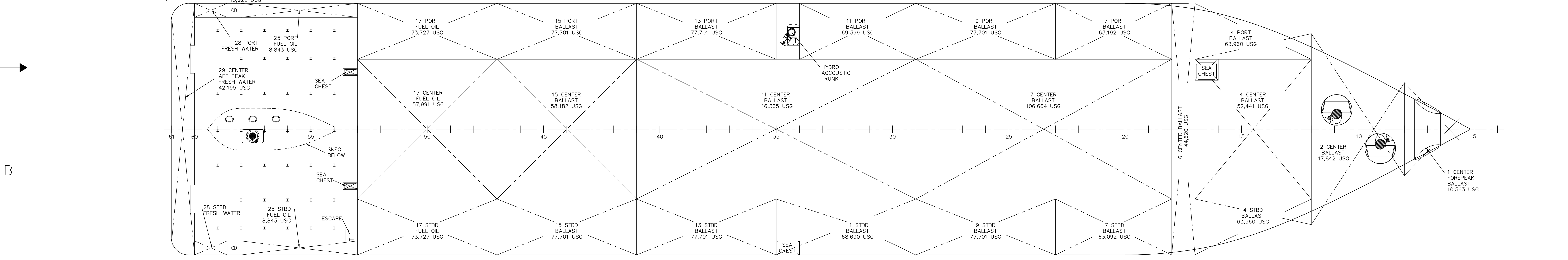
DRAWN BY: DJH	DATE: 1/5/06	DNC of Mobile, Inc. 113 S. Dearborn St., Mobile, AL 36602 Phone: 251-432-8722 Fax: 251-432-8779 www.dncofmobile.com	
CHKD. BY:	DATE:	MULTIPURPOSE SUPPLY VESSEL 373'-4" X 72'-0" X 25'-0" GENERAL ARRANGEMENTS D/O SERVICE	
APPD. BY:	DATE:		
CONTRACT NO:		SIZE	REV
HOS TASK NO: 1359		HULL NO	DWG NO
		D	1.001
		SCALE: 3/32"=1'-0"	JOB NO: 1340 SHEET 1 OF 3

12 11 10 9 8 7 6 5 4 3

2 1



TANK PLAN



INBOARD PROFILE

ZONE	REV	DESCRIPTION	DATE	APPROVED
9-B	13	1. ADDED DAUGHTER CRAFT LAUNCHER AND VESSEL.	9/29/11	CSR
9-C	13	2. ADDED MSCR EQUIPMENT.		
8-D	14	1. NOTED TANKS AND PIPING FOR OSR-S SERVICE.	1-27-12	CRH
20-A	14	2. UPDATED TANKS 17 P/S FROM BALLAST TO FUEL OIL.		
22	14	1. REMOVED OSR-S EQUIPMENT.	7-19-16	MGS
ALL	15	2. REMOVED 3RD DECK ACCOMMODATION MODULES & DAUGHTER CRAFT.		
ALL	16	1. REVISED TANK CAPACITIES TO REFLECT UPDATED TANK TABLES. APPROVED 01 DECEMBER 2016.	1-26-17	MGS

ZONE	REV	DESCRIPTION	DATE	APPROVED
ALL	2	1. ALTERED PRINCIPAL CHARACTERISTICS TO SUIT 2. UPDATED TANKS, INCORPORATED MIDSHIP PUMP ROOM 3. ADDED ACCESS TO PUMP ROOM FROM MAIN DECK 4. DELETED TANK GAGING FROM ABOVE MAIN DECK 5. RELOCATED HOSE REEL AND FAIRLEADS FROM FR 37 TO FR 20 6. REVISED LASHING PADEYES 7. ADDED STORES CRANE AFT 8. REVISED AND RELOCATED RESCUE BOAT AND DAWIT 9. REVISED HANDRAILS TO SUIT 10. RELOCATED LAUNDRY AND INCORPORATED HOSPITAL 11. RELOCATED HEADS ON 2ND AND 3RD DECK 12. REVISED ANCHOR WINDLASS AND CHAIN LOCKER LOCATIONS, REVISED FRESH WTR AND HYD OIL TANKS TO SUIT 13. REVISED ANCHOR POKET 14. ALTERED RUBBER BUMPER TO SUIT 15. ADDED SEA CHESTS FORWARD OF FR 18 AND AFT OF FR 53	6/5/06	

ALL	3	1. REVISED TANK CAPACITIES, ALTERED PRINCIPAL CHARACTERISTICS TO SUIT 2. DELETED ANCHOR BOLSTER AND POCKET, REVISED ANCHOR STOWAGE 3. REVISED FOCSE DECK ARRANGEMENT, LOCATION OF FORE MAST, FWD DECK CRANE AND ANCHOR WINDLASS 4. REVISED CHAIN LOCKER LOCATIONS, REVISED FRESH WTR AND HYD OIL TANKS TO SUIT	7/18/06	
-----	---	---	---------	--

ALL	4	1. REVISED WOOD DK DETAILS TO SUIT NEW ACCESS OPENING AND HATCHES 2. REVISED RUBBER BUMPER DETAILS TO SUIT REVISED REF. #8 3. ALT DK CRANE LOCATION TO SUIT DWG DEVELOPMENT. 4. REVISED COMPANIONWAY LOCATION ON PORT AND STBD SIDE TO SUIT DWG DEVELOPMENT. 5. REVISED CARGO RAIL END CONNECTIONS FWD AND AFT. 6. REVISED BULWARK TO SUIT DWG DEVELOPMENT. 7. ADDED REF. #13 AND REVISED DWG TO SUIT. 8. REMOVED PUMP ROOM ACCESS OPENING ALONG CENTER LINE FWD FR-35 AT MAIN DECK. 9. ADDED RESERVATION #1.	4/02/07	
-----	---	---	---------	--

ALL	5	1. DELETED OVAL SHAPED MULTI-BOLT VENTILATION HATCHES FROM MAIN DECK 2. REVISED COMPANIONWAY CUTOFF AND STRUCTURAL SUPPORT AT MN DK ON PORT AND STBD SIDE TO SUIT DWG DEVELOPMENT. 3. LIFTED RESERVATION NO. 1. 4. ADDED HYDRO ACOUSTIC TRUNK IWO FR 34 PORT. 5. ADDED SLIDING W.T. DOOR IWO LONG'L BHD 14'-0" OFF CL STBD. PUMP ROOM. 6. REMOVED SLIDING DOORS 20'-0" OFF CL IWO PUMP ROOM AND ADDED ARCHWAY 7. W.T. DOORS NOT ALLOWED IN D.O. SERVICE, DELETED DOORS AND ADDED ESCAPE LADDERS AND HATCHES. 8. ADDED RESERVATIONS 2, 3, AND 4.	6/15/07	
-----	---	--	---------	--

ALL	6	1. REVISED PILOTHOUSE WINDOWS, REVISED THE AFT STORES CRANE, UPDATED THE PILOTHOUSE TOP ADD RADAR DOME TO 3RD DECK, UPDATED WOOD DECKING, MOVED EMERG GEN ROOM TO BRIDGE DECK. 2. ADDED BRIDGE DECK TOP PLAN 3. REPLACED PORT SIDE FWD-AFT DOORS INTO PUMP ROOM IN D/O SERVICE WITH BOLTED PLATE. 4. DELETED DOORS THRU FR 53 AND 47. 5. ADDED 2ND ESCAPE FROM TWO MACHY SPACE. 6. ADDED DOOR FROM CARGO CONTROL ROOM TO DROP DOWN THRUSTER RM. 7. RESTORED HATCH INTO PUMP ROOM, ALONG WITH SMALLER PERSONNEL HATCH. 8. RESTORED DOOR THRU FR 53.	02/07/08	T.M. R.T.
-----	---	---	----------	-----------

ALL	7	FIRST REVISION FOR VESSEL 1 ONLY, M/V HOS CENTERLINE		
ALL	7	1. ADDED PROP GEN EXH TRUNKS ON 3RD DECK. 2. REVISED TANK CAPACITIES TO REFLECT TANK TABLES DATED 23 SEPT 2008. 3. MOVE VISIT TO PORT SIDE (AS-BUILT). 4. REVISED LOCATION OF SHIP STORES CRANE (AS-BUILT).	3/11/09	LMS

ALL	8	1. REVISED CARGO OF TANKS 18P,C,&S WHILE IN L SERVICE. WAS HAZARDOUS CARGO. 2. FIXED REV WRITE UP FOR ITEM 6-3. ADDED REV WRITE-UP 6-7, AND 6-8. 3. IN L SERVICE, REVISED CAPACITY OF TANKS 8C,10C,12C,14C, 16C, AND 18C TO BE AT 95% FULL FOR TANK VENTS.	3/20/09	LMS
-----	---	--	---------	-----

23-C	9	1. ADDED CORNER GUSSETS BETWEEN FRs. 31 & 32 AND FRs. 38 & 39 STBD OF CENTERLINE 2. ADDED GUSSETS BETWEEN FRs. 31 & 32 AND 36 & 37 AT 28'-9" OFF C.L. (P/S)	04/29/09	DKS
7-A	10	1. UPDATED PLIMSOLL MARKS TO SHOW BOTH I AND L SERVICES. 2. CHANGED TANK 29C FROM BALLAST TO FRESH WATER. 3. UPDATED PRINCIPLE CHARACTERISTICS.	06/01/09	TM
ALL	11	1. RESTORED DOOR INTO COMPANIONWAY P&S WHICH WAS DELETED DUE TO DRAFTING ERROR 2. UPDATED PRINCIPLE CHARACTERISTICS	10/4/09	LMS
ALL	12	1. UPDATED TANK CAPACITIES	12/08/09	TM RT

HORNBECK OFFSHORE SERVICES

THIS DRAWING, DESIGN CONCEPT AND SPECIFICATIONS ARE THE PROPERTY OF HORNBECK OFFSHORE SERVICES AND ARE FURNISHED ON A CONFIDENTIAL BASIS WITH AN EXPRESSED UNDERSTANDING THAT THEY WILL NOT BE COPIED IN ANY MANNER USED FOR MANUFACTURE, SOLD, TRANSFERRED, NOR USED TO THE DETRIMENT OF SAID FIRM WITHOUT WRITTEN PERMISSION.

DRAWN BY: DJH DATE: 1/9/06
CHKD. BY: DATE:
APPO. BY: DATE:

DNC of Mobile, Inc.
113 S. Dearborn St., Mobile, AL 36602
Phone: 251-432-8722 Fax: 251-432-8779 www.dncofmobile.com

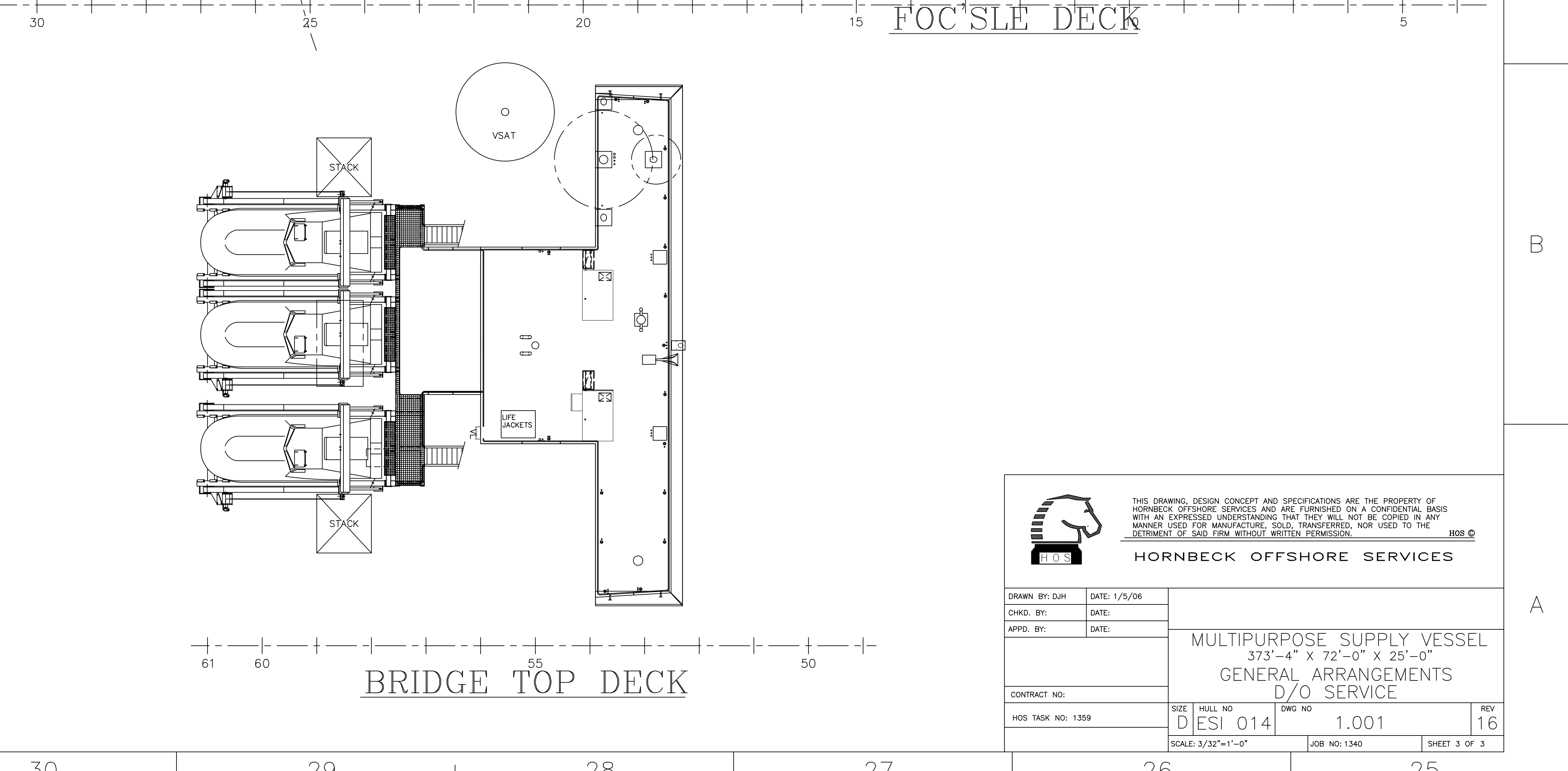
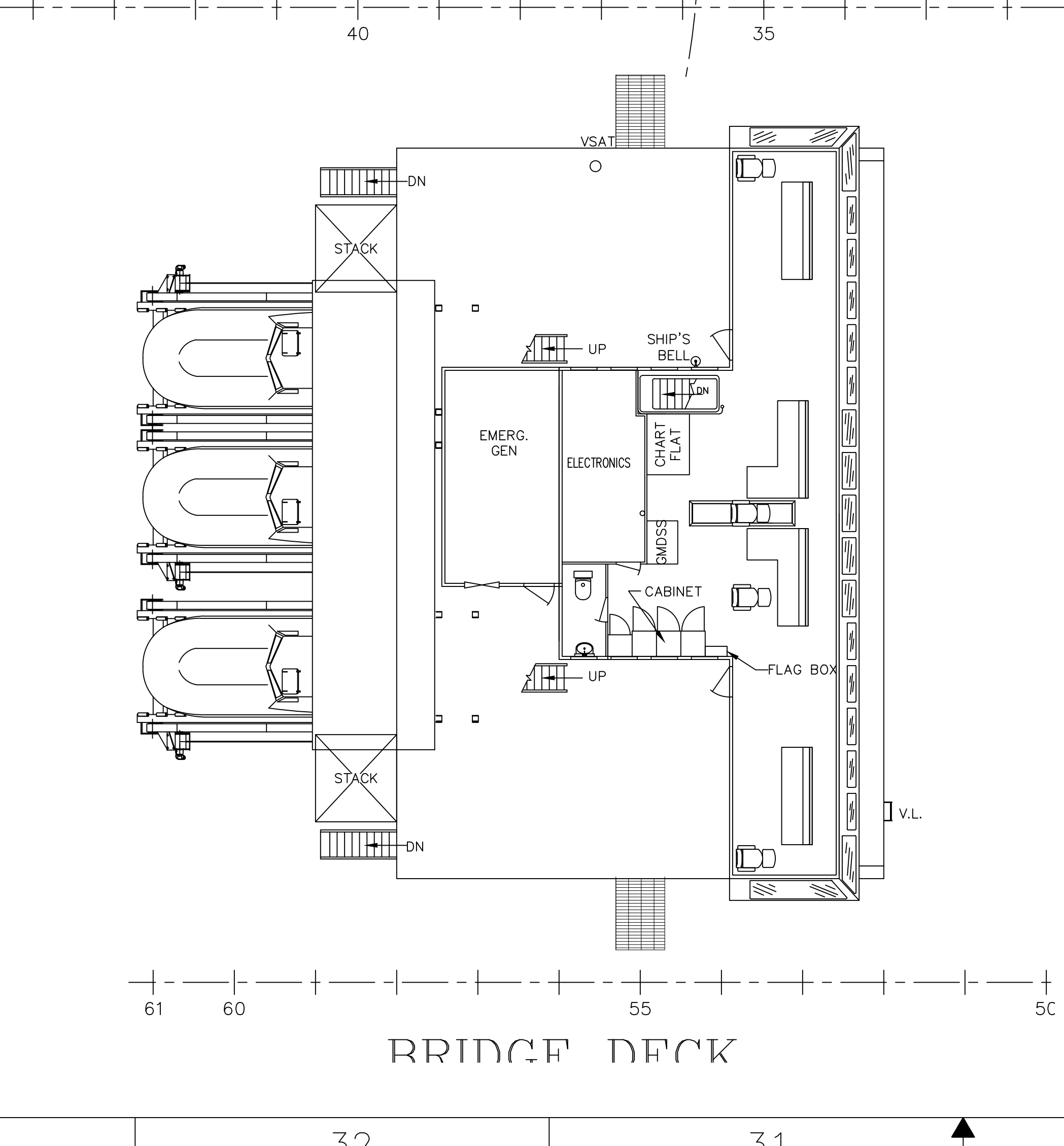
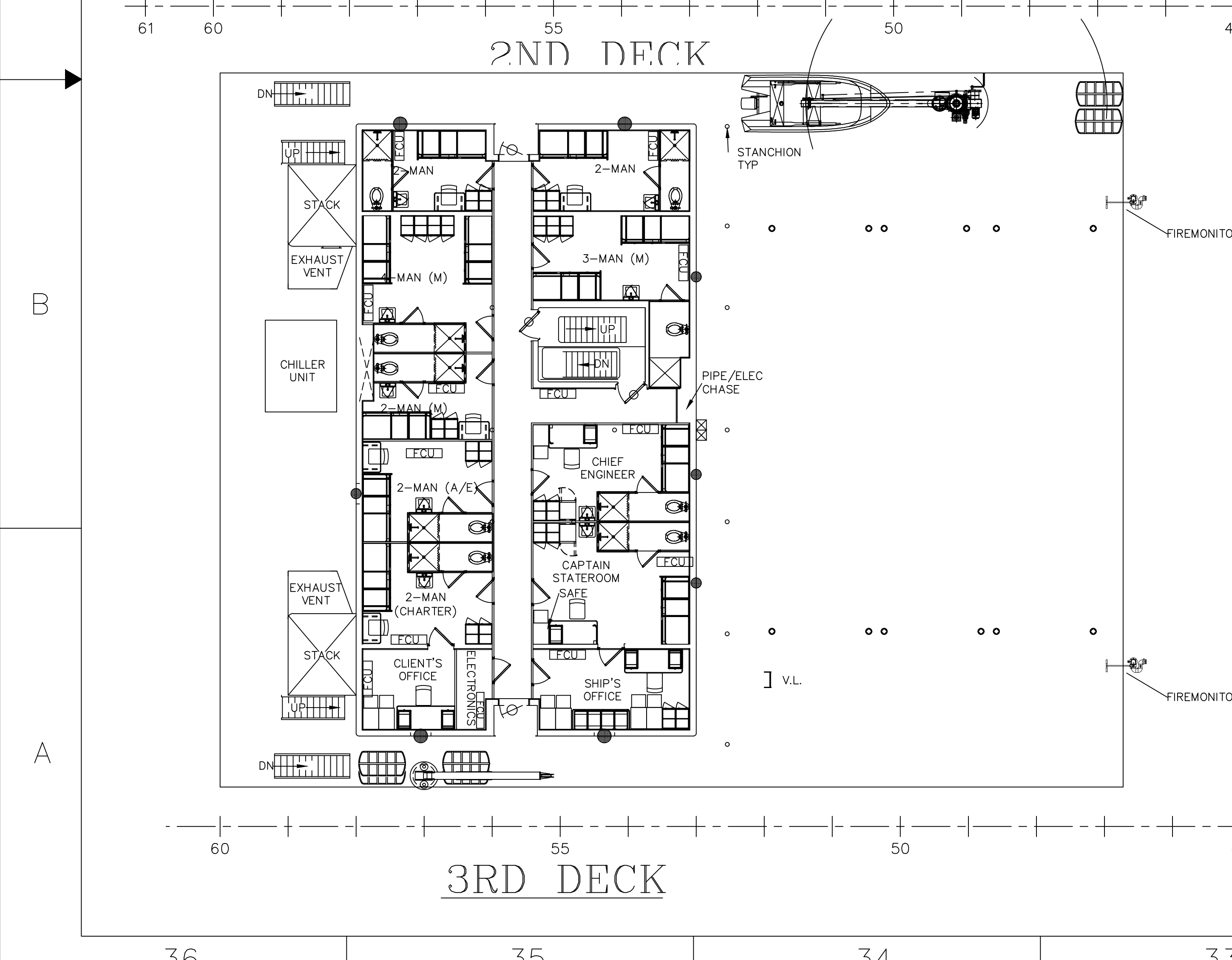
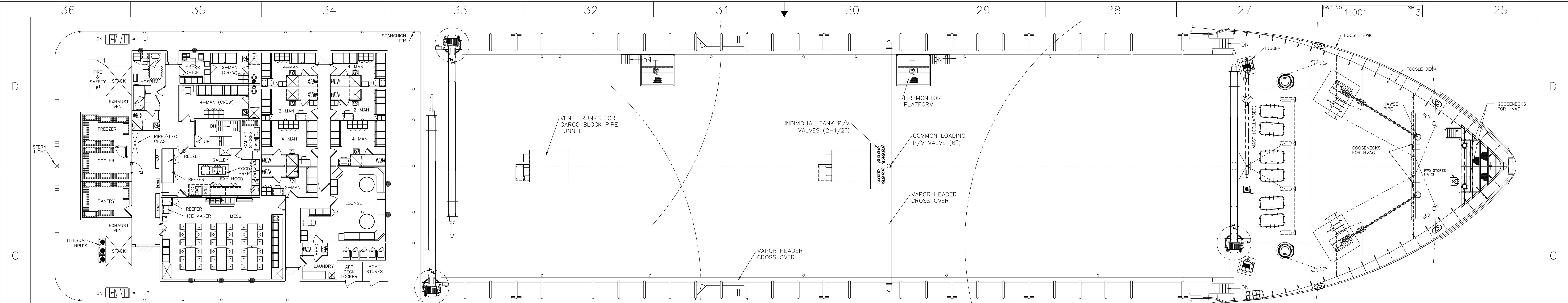
MULTIPURPOSE SUPPLY VESSEL
373'-4" x 72'-0" x 25'-0"

GENERAL ARRANGEMENTS
D/O SERVICE

CONTRACT NO:
HOS TASK NO: 1359

SIZE: HULL NO: DWG NO: REV
D ESI 014 1.001 16

SCALE: 3/32"=1'-0" JOB NO: 1340 SHEET 2 OF 3



HOS HORNBECK OFFSHORE SERVICES

THIS DRAWING, DESIGN CONCEPT AND SPECIFICATIONS ARE THE PROPERTY OF HORNBECK OFFSHORE SERVICES AND ARE FURNISHED ON A CONFIDENTIAL BASIS WITH AN EXPRESSED UNDERSTANDING THAT THEY WILL NOT BE COPIED IN ANY MANNER USED FOR MANUFACTURE, SOLD, TRANSFERRED, NOR USED TO THE DETRIMENT OF SAID FIRM WITHOUT WRITTEN PERMISSION.

DRAWN BY: DJH	DATE: 1/3/06
CHKD. BY:	DATE:
APPD. BY:	DATE:
MULTIPURPOSE SUPPLY VESSEL 373'-4" X 72'-0" X 25'-0" GENERAL ARRANGEMENTS D/O SERVICE	
CONTRACT NO:	SIZE HULL NO DWG NO REV
HOS TASK NO: 1359	D ESI 014 1.001 16
SCALE: 3/32"=1'-0"	
JOB NO: 1340	SHEET 3 OF 3