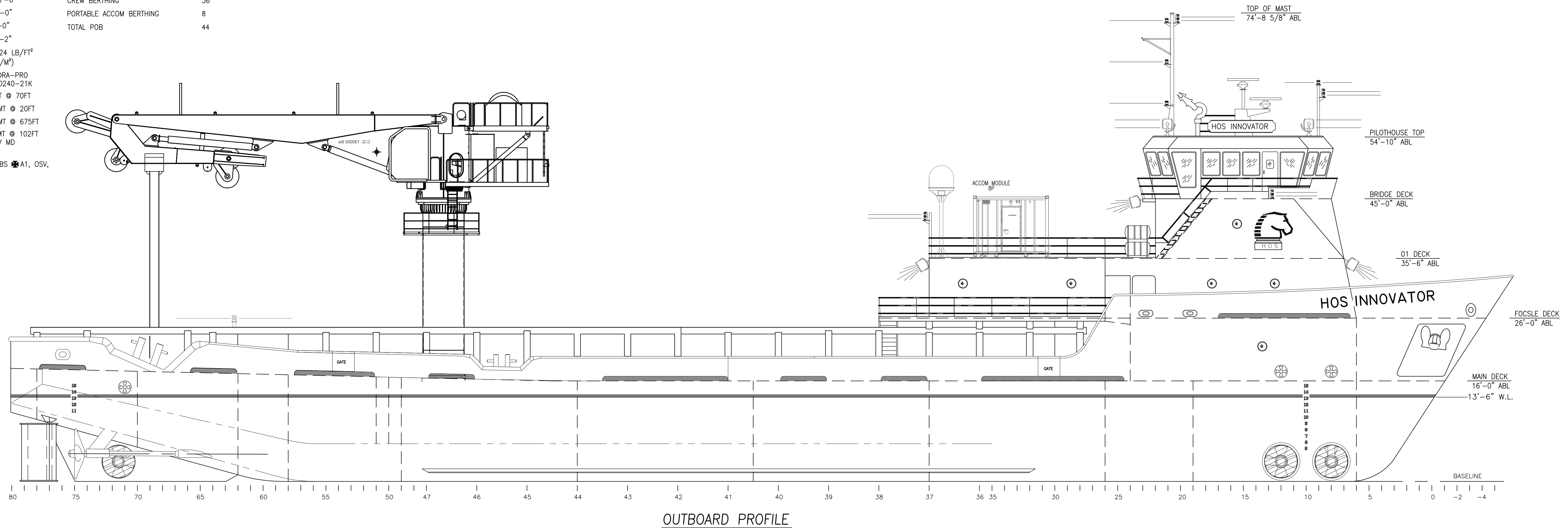


PRINCIPAL PARTICULARS

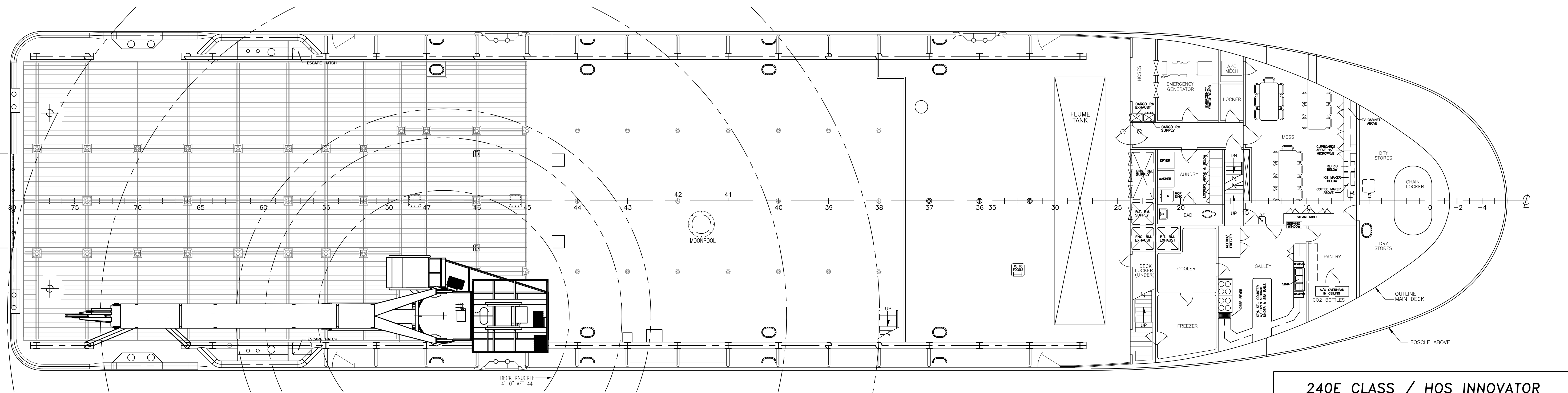
LOA 240'-0"
 LBP 220'-6"
 BEAM 54'-0"
 DEPTH 16'-0"
 LOADLINE DRAFT (SUMMER) 13'-2"
 DECK LOAD RATING (MAIN DECK) 1,024 LB/FT² (51/M²)
 KNUCKLE BOOM CRANE HYDRA-PRO HPO240-21K
 MAX LIFT @ MAX RADIUS 7MT @ 70FT
 MAX LIFT @ MIN RADIUS 36MT @ 20FT
 MAX LIFT @ MAX DEPTH 35MT @ 675FT
 MAX LIFT @ MAX HEIGHT 18MT @ 102FT ABV MD
 REGULATORY:
 USCG SUB I & L SOLAS, LOADLINE, ABS A1, OSV,
 AMS, DPS-2, ACP, CRC

ACCOMMODATIONS

VESSEL CREW STATEROOMS 14
 CREW BERTHING 36
 PORTABLE ACCOM BERTHING 8
 TOTAL POB 44



OUTBOARD PROFILE



MAIN DECK
16'-0" ABL

240E CLASS / HOS INNOVATOR

THIS DRAWING, DESIGN CONCEPT AND SPECIFICATIONS ARE THE PROPERTY OF HORNBECK OFFSHORE SERVICES AND ARE FURNISHED ON A CONFIDENTIAL BASIS WITH AN EXPRESSED UNDERSTANDING THAT THEY WILL NOT BE COPIED IN ANY MANNER USED FOR MANUFACTURE, SOLD, TRANSFERRED, NOR USED TO THE DETRIMENT OF SAID FIRM WITHOUT WRITTEN PERMISSION.

| | | | |
|-----------------------------|--|--|---------------------|
| DRAWN BY: S. MAUL | | 240'-0" X 54'-0" X 17'-0" | |
| CHECKED BY: M. STANSBURY | | OUTBOARD PROFILE & GENERAL ARRANGEMENT | |
| APPROVED BY: J. GUIDRY | | TASK No. 8063 | SCALE: 1/8" = 1'-0" |
| | | DRAWING No. 1,001 | DATE: 02/27/12 |
| | | HULL No. 326 | SY: LVI |
| | | SHEET 1 OF 2 | |

LAST SAVE/PRINT: 10/24/2024 2:26 PM
 ENG: JSULLIVA
 SHEET: ANSI D 22x34



16

15

14

13

12

11

10

9

D

D

C

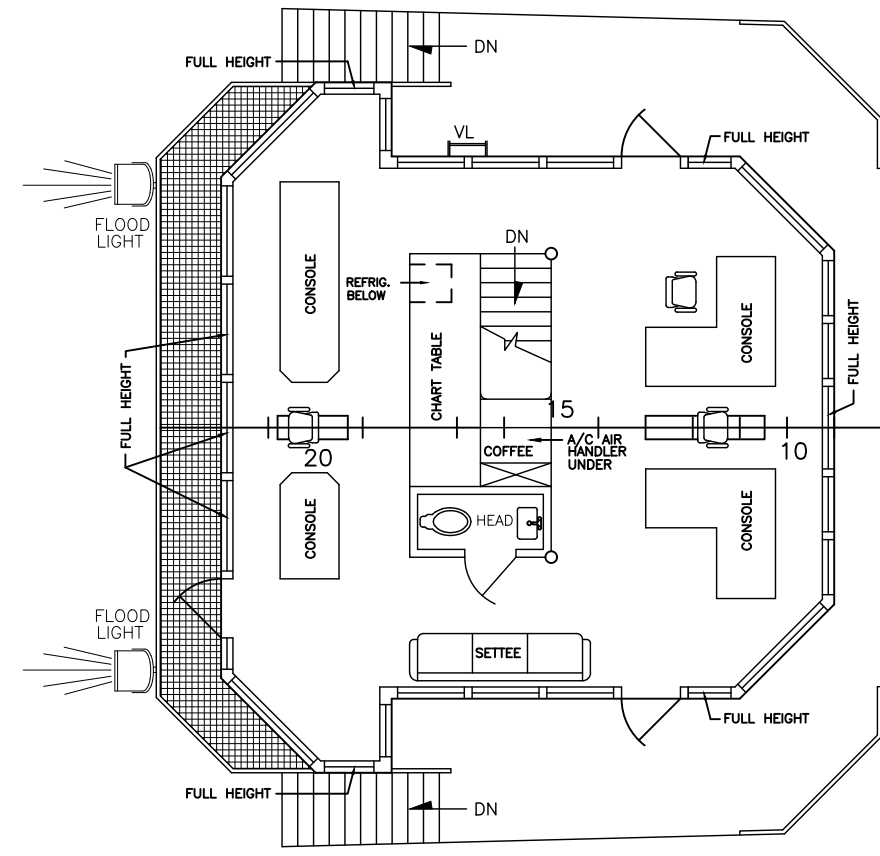
C

B

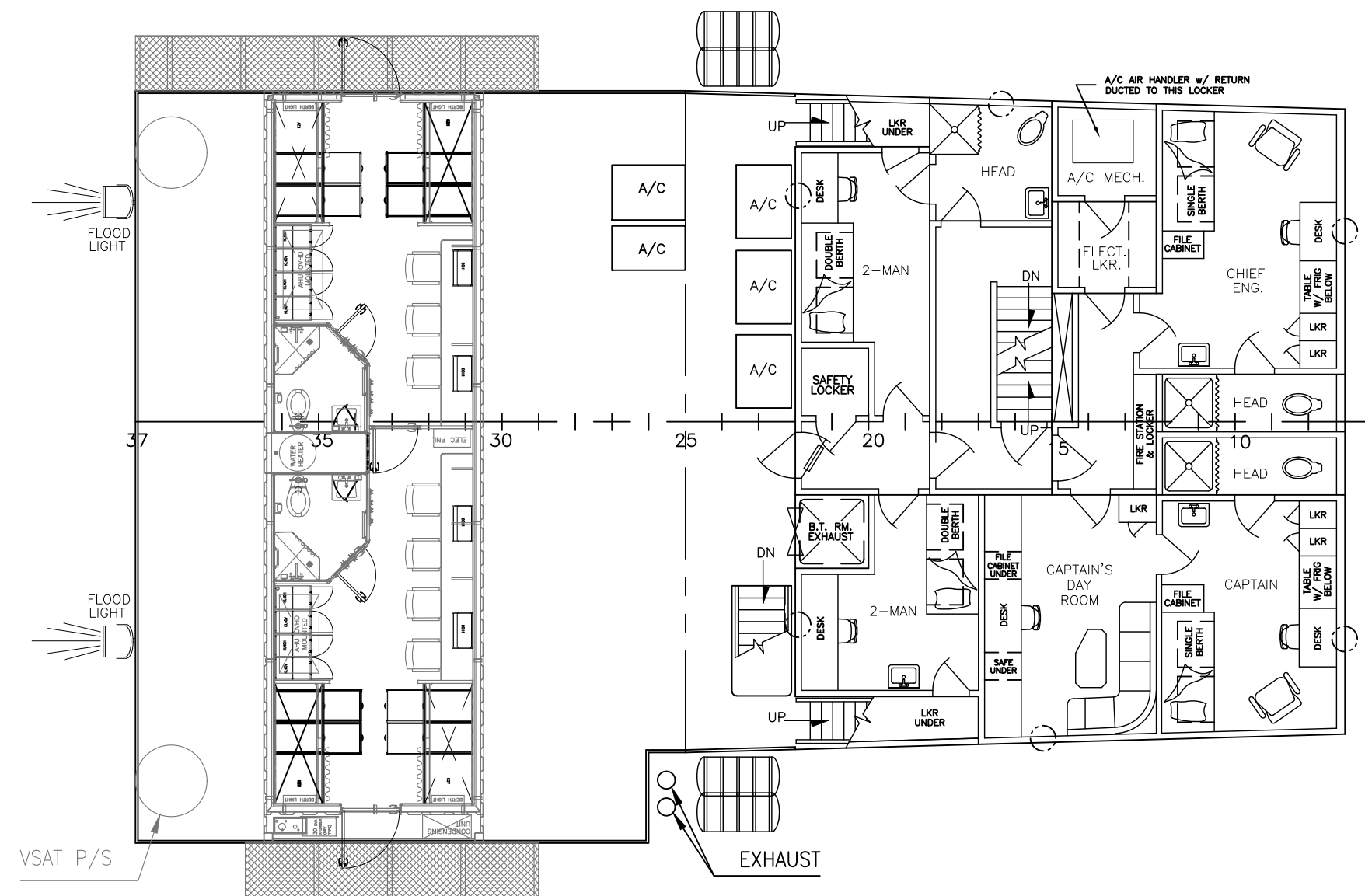
B

A

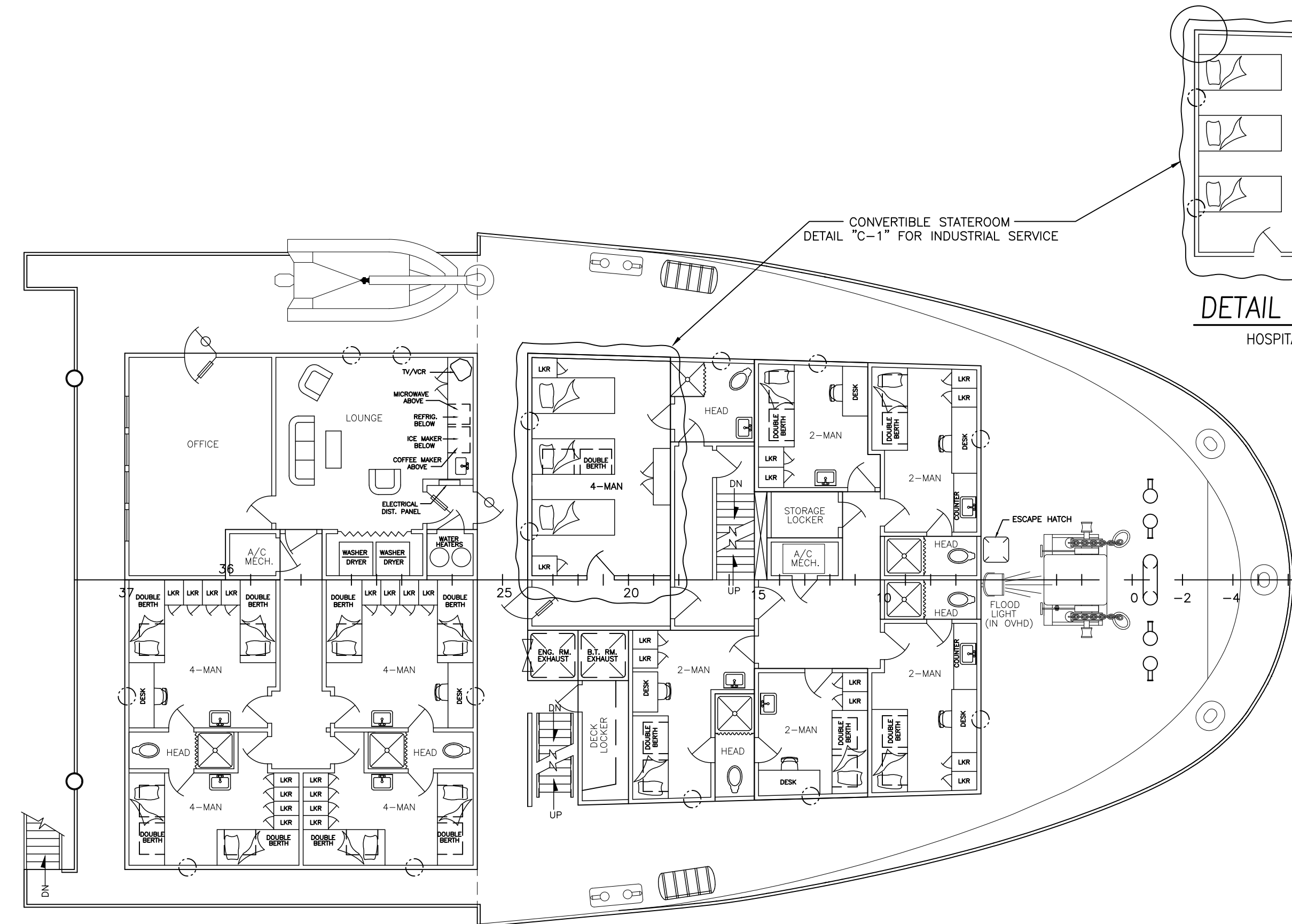
A



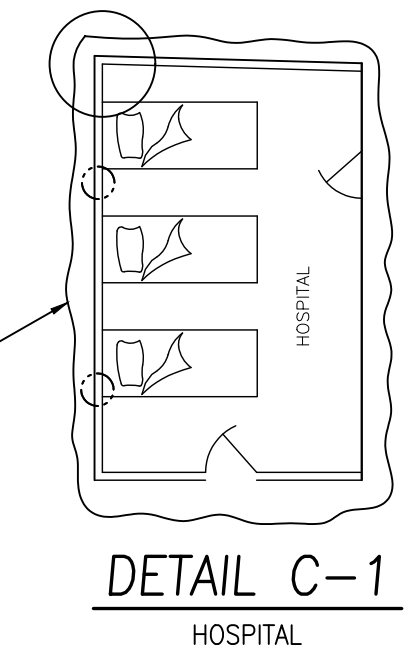
BRIDGE DECK
45'-0" ABL



01 DECK
35'-6" ABL



FOCSLE DECK
26'-0" ABL



DETAIL C-1
HOSPITAL

| | | | | | |
|-----------------------------------|---|--------------------------|----------------------------|---|----------------|
| <p>HORNBECK OFFSHORE SERVICES</p> | <p>THIS DRAWING, DESIGN CONCEPT AND SPECIFICATIONS ARE THE PROPERTY OF HORNBECK OFFSHORE SERVICES AND ARE FURNISHED ON A CONFIDENTIAL BASIS WITH AN EXPRESSED UNDERSTANDING THAT THEY WILL NOT BE COPIED IN ANY MANNER USED FOR MANUFACTURE, SALE, TRANSFER, NOR USED TO THE DETRIMENT OF SAID FIRM WITHOUT WRITTEN PERMISSION.</p> | | | <p>OUTBOARD PROFILE & GENERAL ARRANGEMENT</p> | <p>SIZE D</p> |
| | <p>TASK No. 8063</p> | <p>DRAWING No. 1,001</p> | <p>SCALE: 1/8" = 1'-0"</p> | <p>DATE: 02/27/12</p> | <p>REV. 13</p> |
| | <p>HULL No. 326</p> | <p>SY: LVI</p> | <p>SHEET 2 OF 2</p> | | |

16

15

14

13

12

11

10

9