

PRINCIPAL PARTICULARS

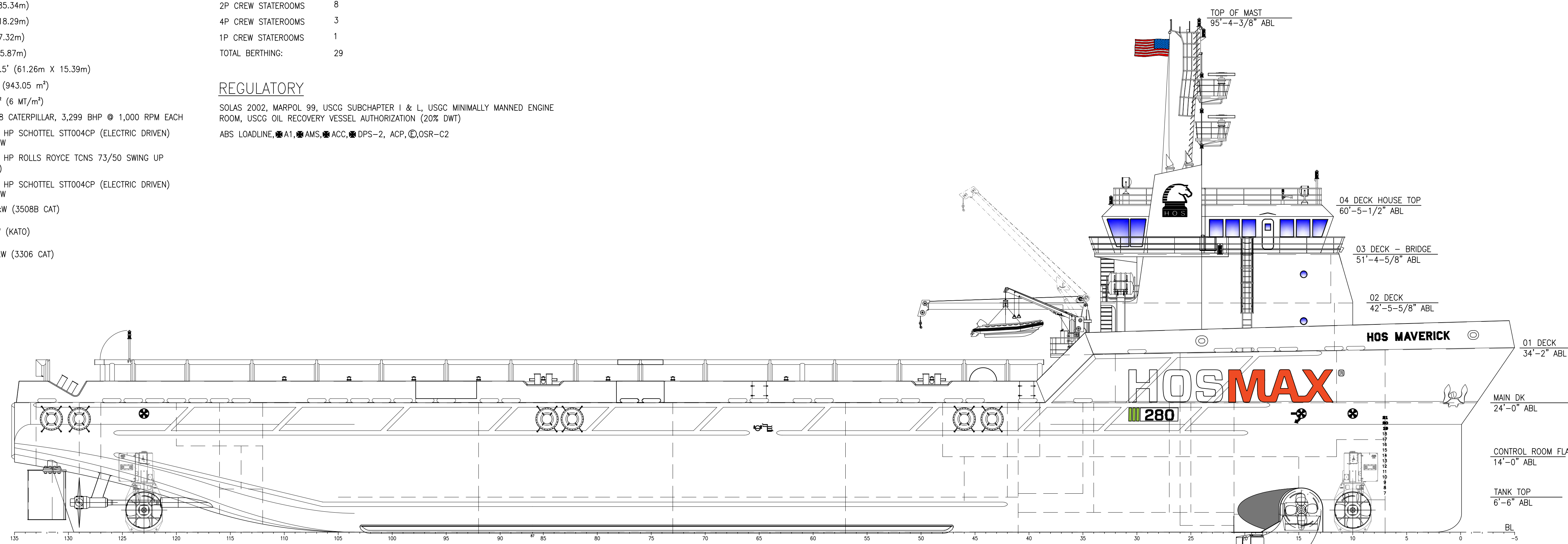
LOA	280'-0" (85.34m)
BREADTH	60'-0" (18.29m)
DEPTH	24'-0" (7.32m)
DRAFT (LOADLINE)	19.25' (5.87m)
CLEAR DECK CARGO SPACE	201' X 50.5' (61.26m X 15.39m)
CLEAR DECK CARGO AREA	10,151 ft ² (943.05 m ²)
CARGO DECK RATING	1,200 lb/ft ² (6 MT/m ²)
MAIN PROPULSION	(2) X 3608 CATERPILLAR, 3,299 BHP @ 1,000 RPM EACH
BOW THRUSTER-TUNNEL	1 X 1,700 HP SCHOTTEL STT004CP (ELECTRIC DRIVEN) 1,267.52 kW
BOW THRUSTER-SWING	1 X 1,100 HP ROLLS ROYCE TCNS 73/50 SWING UP (3508 CAT)
STERN THRUSTER-TUNNEL	1 X 1,700 HP SCHOTTEL STT004CP (ELECTRIC DRIVEN) 1,267.52 kW
SHIPS SERVICE DIESEL GENERATOR	2 X 910 kW (3508B CAT)
SHAFT GENERATOR FOR ELECTRIC THRUSTERS	2 X 2 mW (KATO)
EMERGENCY DIESEL GENERATOR	1 X 170 kW (3306 CAT)

ACCOMMODATIONS

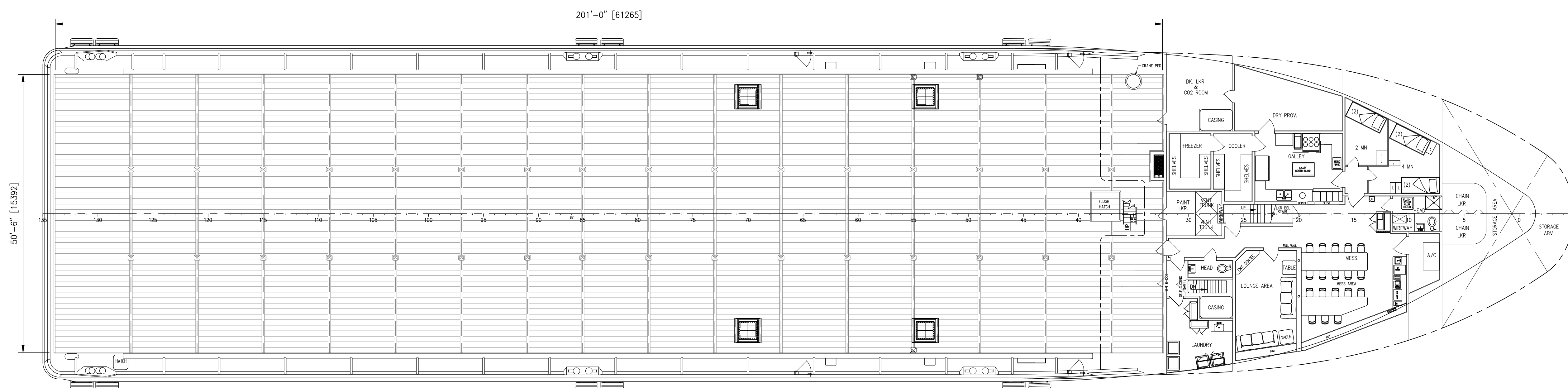
2P CREW STATEROOMS	8
4P CREW STATEROOMS	3
1P CREW STATEROOMS	1
TOTAL BERTHING:	29

REGULATORY

SOLAS 2002, MARPOL 99, USCG SUBCHAPTER 1 & L, USCG MINIMALLY MANNED ENGINE ROOM, USCG OIL RECOVERY VESSEL AUTHORIZATION (20% DWT)
ABS LOADLINE, A1, AMS, ACC, DPS-2, ACP, OSR-C2



OUTBOARD PROFILE



MAIN DECK PLAN
24'-0" ABL

HOSMAX 280 / HOS MAVERICK

THIS DRAWING, DESIGN CONCEPT AND SPECIFICATIONS ARE THE PROPERTY OF HORNBECK OFFSHORE SERVICES AND ARE FURNISHED ON A CONFIDENTIAL BASIS WITH AN EXPRESSED UNDERSTANDING THAT THEY WILL NOT BE COPIED IN ANY MANNER USED FOR MANUFACTURE, SOLD, TRANSFERRED, NOR USED TO THE DETRIMENT OF SAID FIRM WITHOUT WRITTEN PERMISSION.

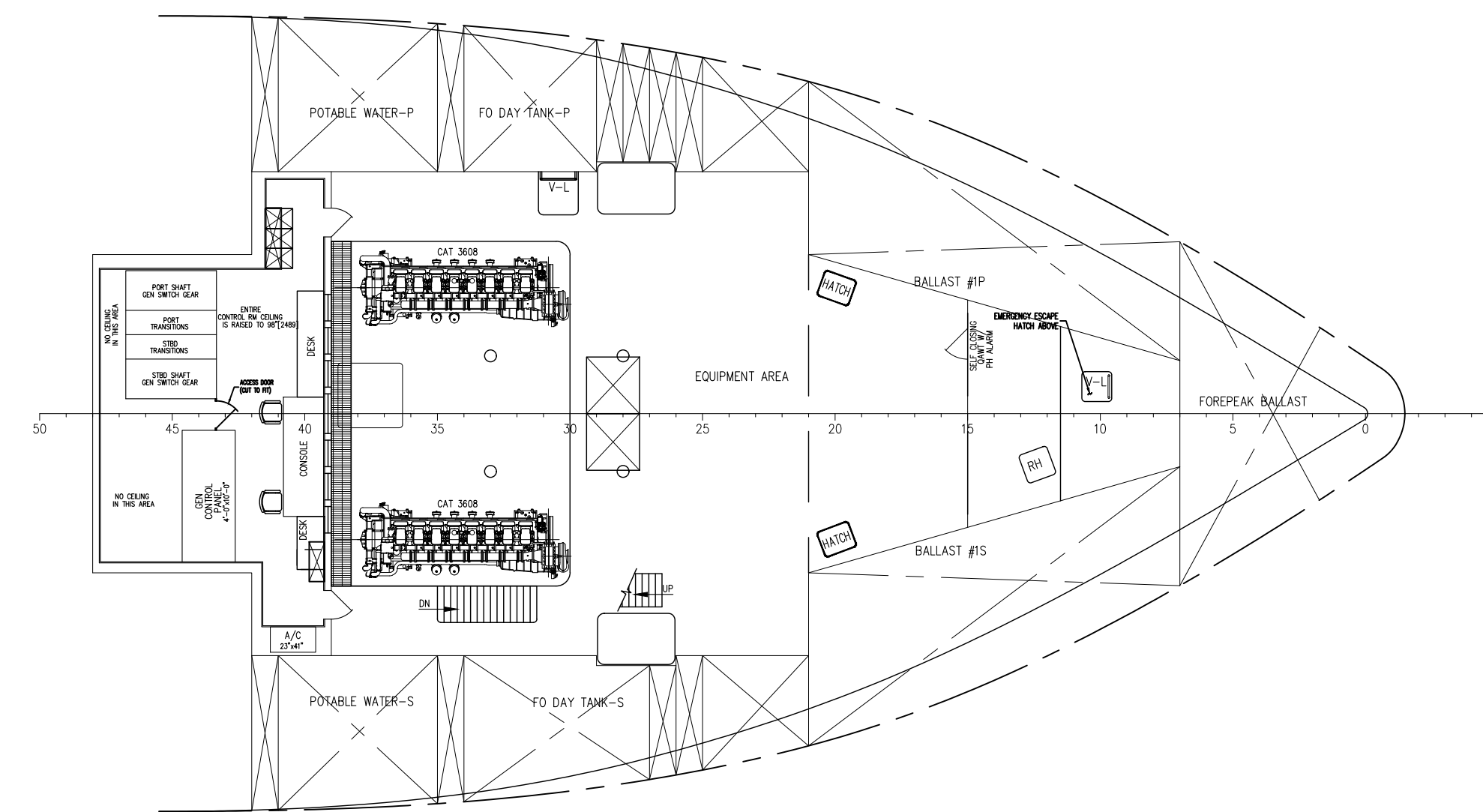
HORNBECK OFFSHORE SERVICES

DRAWN BY: S. MAUL	280'-0" X 60'-0" X 24'-0"			SIZE D
CHECKED BY: M. STANSBURY	OUTBOARD PROFILE & GENERAL ARRANGEMENT			REV. 1
APPROVED BY: J. GUIDRY	TASK No. 7582	DRAWING No. 1,001	SCALE: 3/32"=1'-0" DATE: 01/20/22	SHEET 1 OF 3

FILE: 10/20/2023 1:17 PM
DWG: JSALVIA
SHEET: AMB 8 22534

D

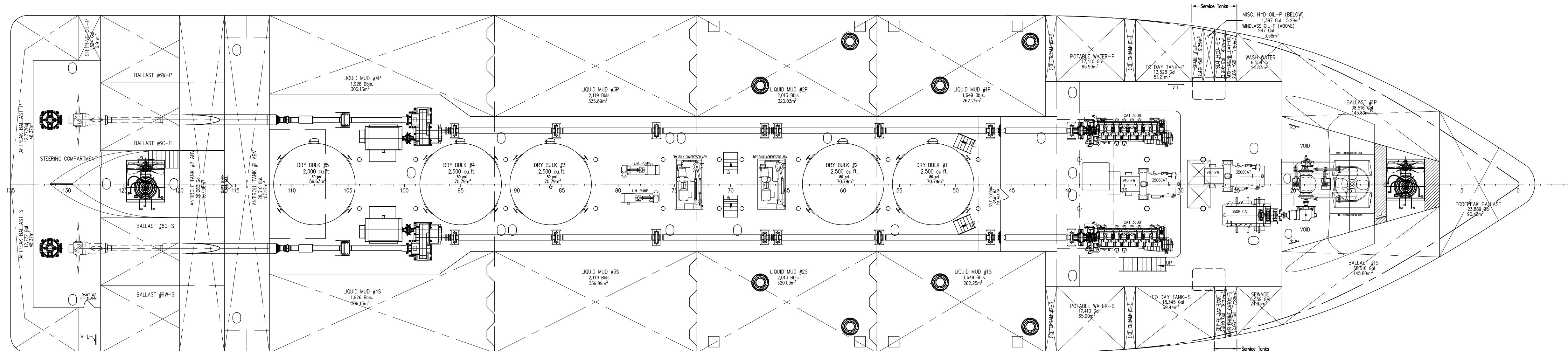
D



CONTROL ROOM FLAT
14'-0" ABL

C

C



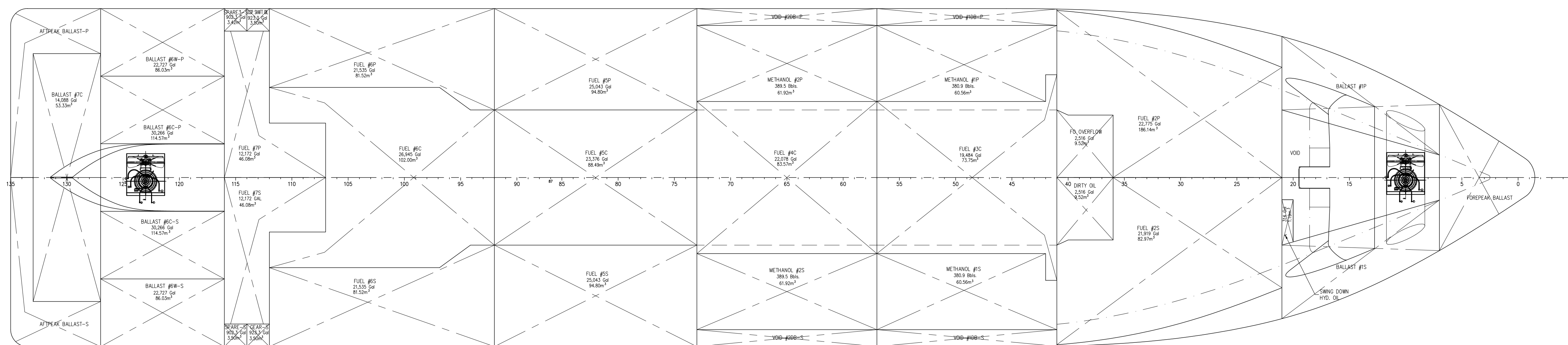
ABOVE TANK TOP PLAN

B

B

A

A



TANK TOP

HORNBECK OFFSHORE SERVICES
THIS DRAWING, DESIGN CONCEPT AND SPECIFICATIONS ARE THE PROPERTY OF HORNBECK OFFSHORE SERVICES AND ARE FURNISHED ON A CONFIDENTIAL BASIS WITH AN EXPRESSED UNDERSTANDING THAT THEY WILL NOT BE COPIED IN ANY MANNER USED FOR MANUFACTURE, SALE, TRANSFER, OR REUSE TO THE DETRIMENT OF SAID FIRM WITHOUT WRITTEN PERMISSION.

OUTBOARD PROFILE & GENERAL ARRANGEMENT		SIZE D
TASK No. 7582	DRAWING No. 1.001	REV. 1
HULL No. 231	SY: NAS	SHEET 2 OF 3
DATE: 01/20/22		

24

23

22

21

20

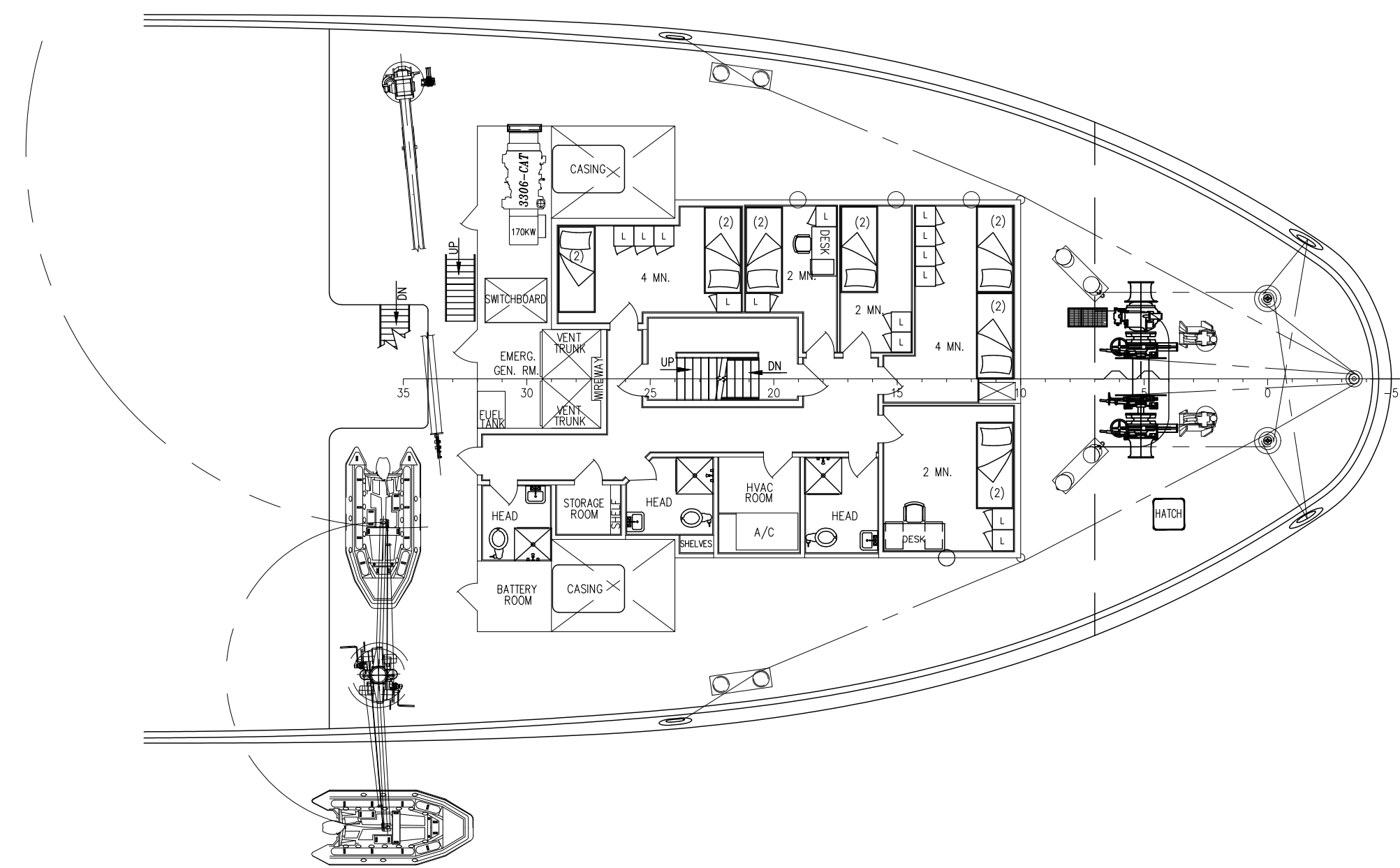
19

18

17

D

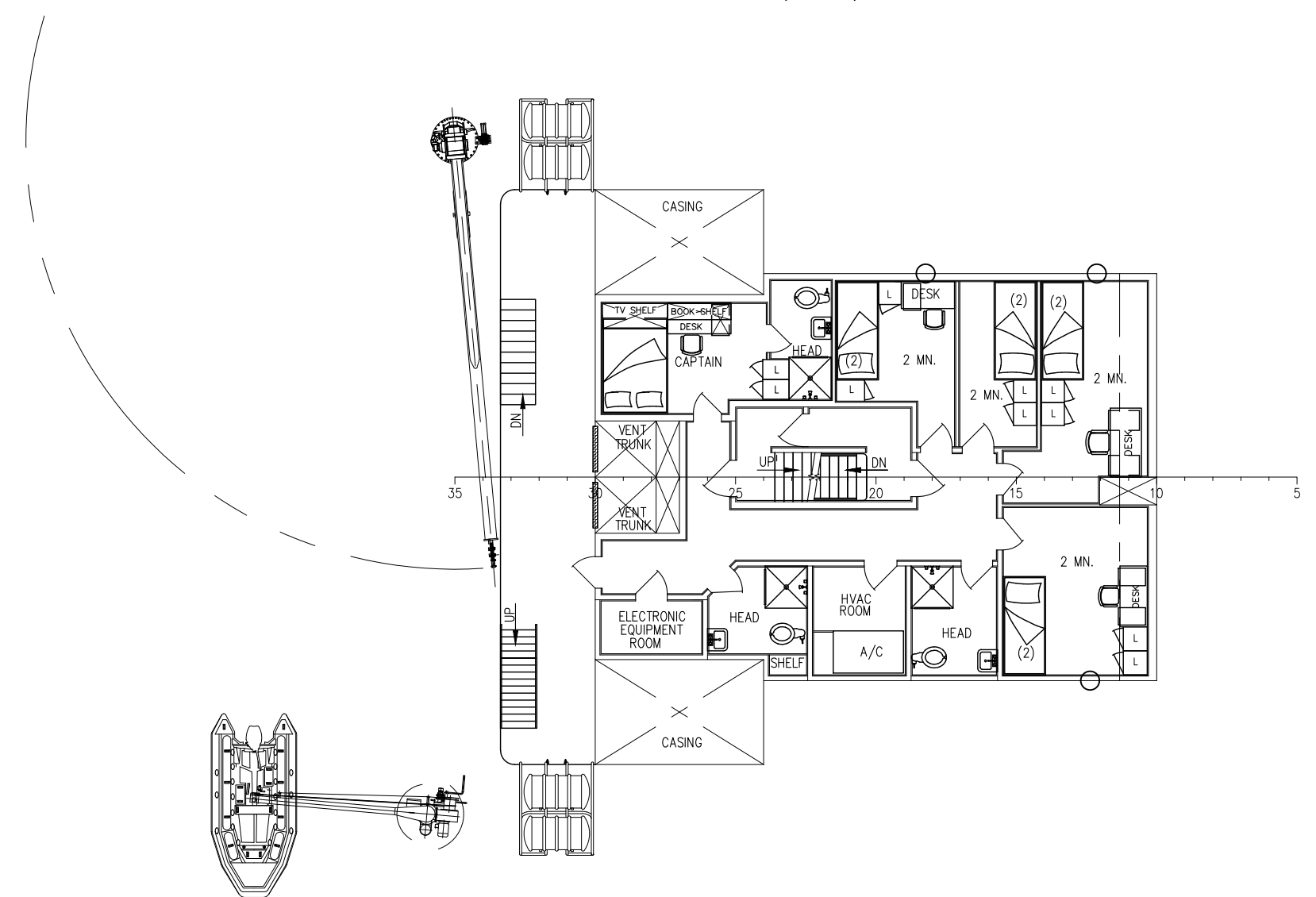
D



01 DECK PLAN
34'-2" ABL (Ø FR5)

C

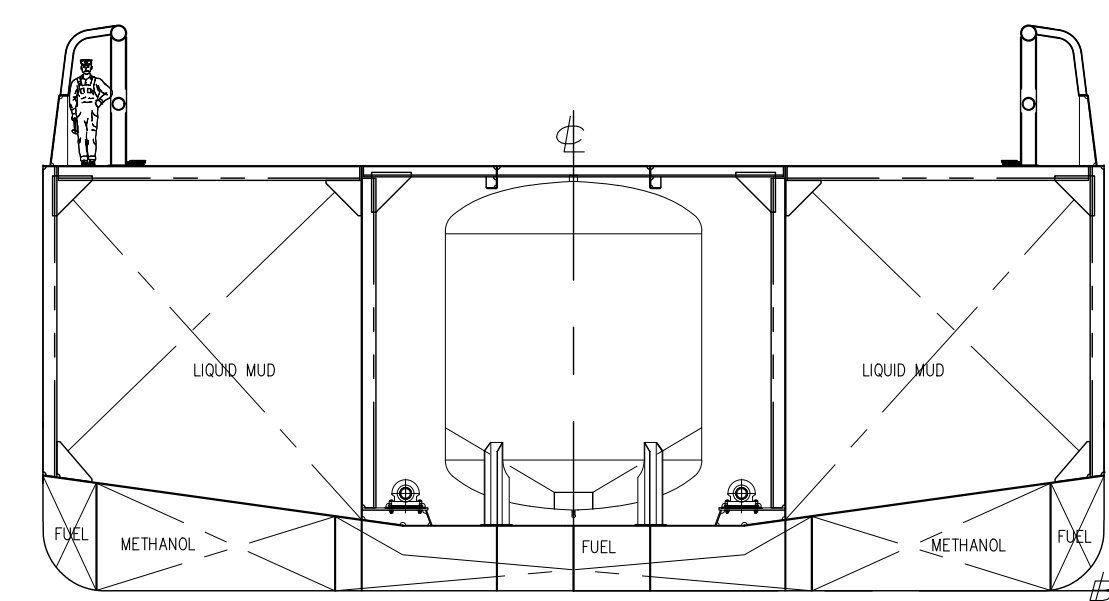
C



02 DECK PLAN
42'-5 5/8" ABL

B

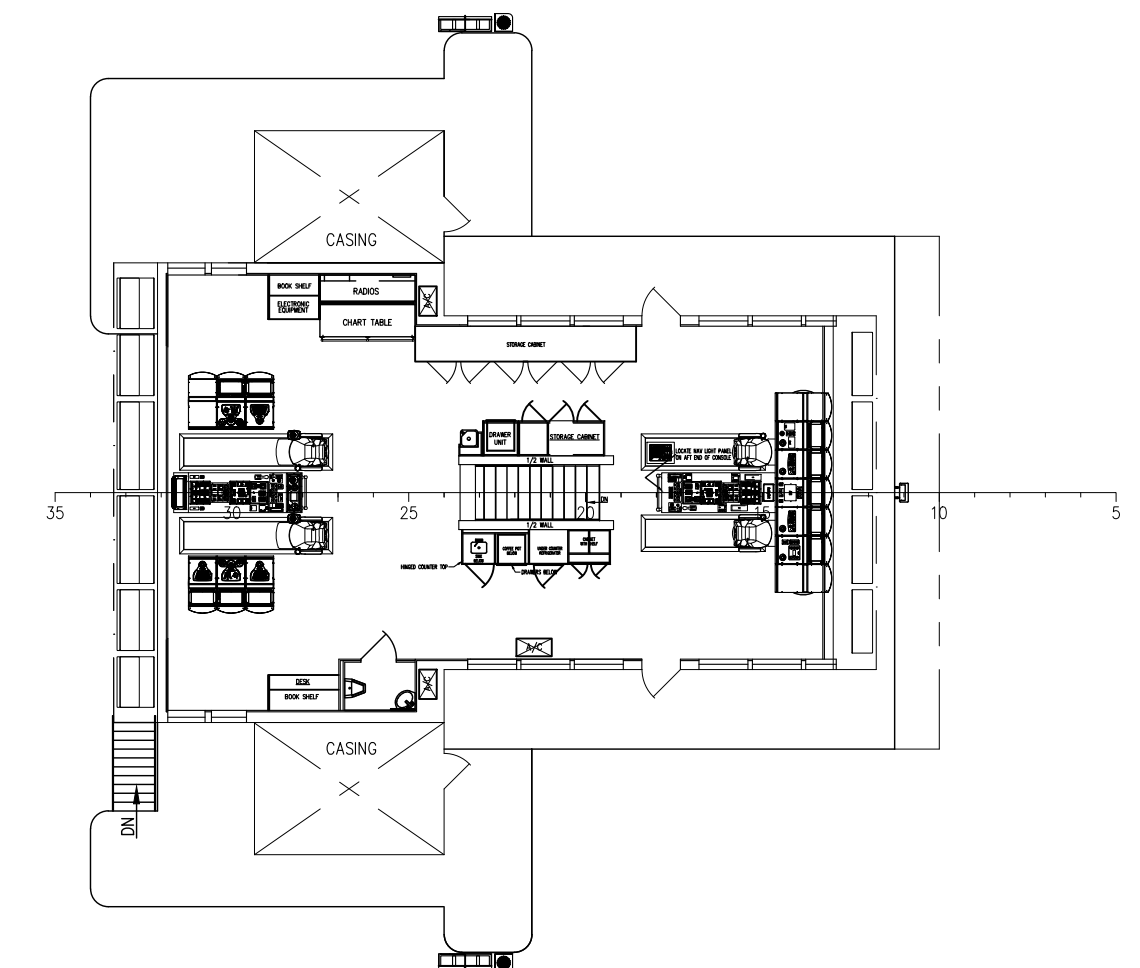
B



CARGO AREA SECTION
APPROX. FR85

A

A



03 DECK PLAN
BRIDGE - 51'-4 5/8" ABL

24

23

22


21

20

19

18

17

 <p>THIS DRAWING, DESIGN CONCEPT AND SPECIFICATIONS ARE THE PROPERTY OF HORNBECK OFFSHORE SERVICES AND ARE FURNISHED ON A CONFIDENTIAL BASIS WITH AN EXPRESSED UNDERSTANDING THAT THEY WILL NOT BE COPIED IN ANY MANNER USED FOR MANUFACTURE, SALE, TRANSFERRED, NOR USED TO THE DETRIMENT OF SAID FIRM WITHOUT WRITTEN PERMISSION.</p> <p>HORNBECK OFFSHORE SERVICES</p>	OUTBOARD PROFILE & GENERAL ARRANGEMENT		SIZE D
	TASK No. 7582	DRAWING No. 1.001	SCALE: 3/32"=1'-0"
	HULL No. 231	SY: NAS	DATE: 01/20/22
			REV. 1
			SHEET 3 OF 3